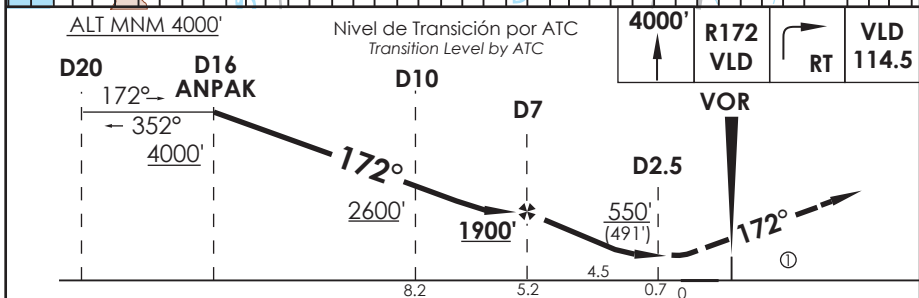
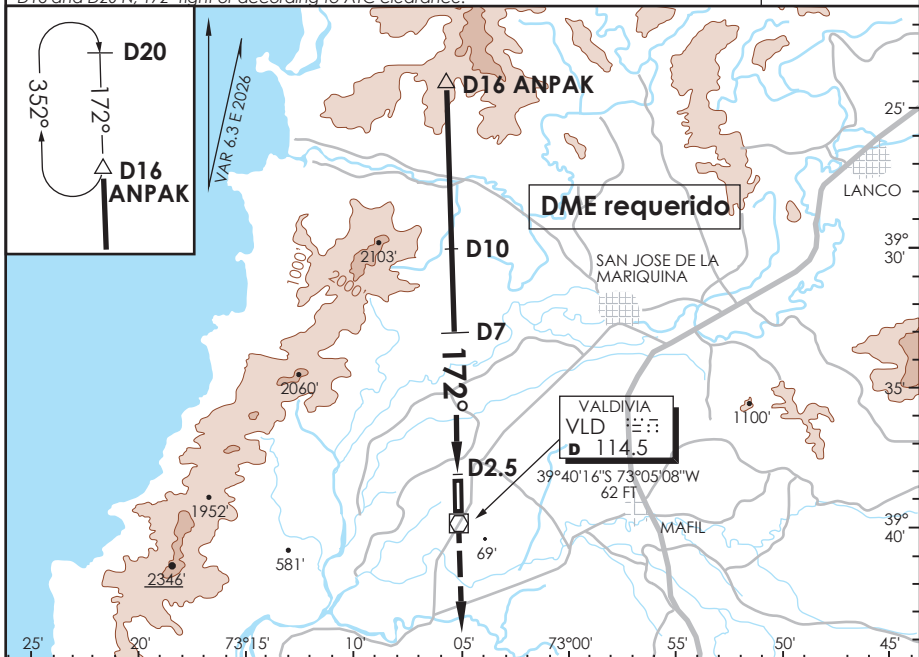


AD. PICHAY VALDIVIA - CHILE

SCVD IAC 2
VOR Rwy 17

APP TEMUCO RADAR APP Temuco RADAR	119.2/128.7	TORRE VALDIVIA Valdivia Tower	118.3	CONTROL TERRESTRE Ground Control	121.8
VOR VLD 114.5	FINAL APCH CRS 172°	MNM ALT D7 1900'	MDA 550' (491')	AD Elev THR 17 Elev	59' 59'
APCH FRUSTRADA: Ascenso a 4000' R172 VLD, regrese derecha VOR VLD. Ingrese HLDG BTN D16 y D20 N, 172° derecha o según ATC CLR. Missed Apch: Climb to 4000' on R172 VLD, right turn direct to VLD VOR. Enter on HLDG between D16 and D20 N, 172° right or according to ATC clearance.					5600 FT MSA 25 NM VLD



CATEGORÍA	DIRECTO RWY 17 <i>Straight in RWY 17</i>	CIRCULANDO <i>Circling</i>	ALTN <i>Alternate Minimums</i>
	MDA 550' (491')		
A	1.6 Km	440' (381')	VER PAG. GEN 2.19
B		540'	
C		(481')	
D	2.3 Km	620' (561')	3.2 Km

Veloc. Terrestre Kts	80	100	120	140	160	Ⓞ MNM razón ASC APCH Frustrada: 200 FT/NM hasta 4000' Missed APCH MNM climb rate: 200 FT/NM till 4000'
Angulo DES 3.28° FPM	464'	580'	696'	813'	929'	
Dist.FAF a MAPT 4.5 NM	3:38	2:70	2:25	1:93	1:69	

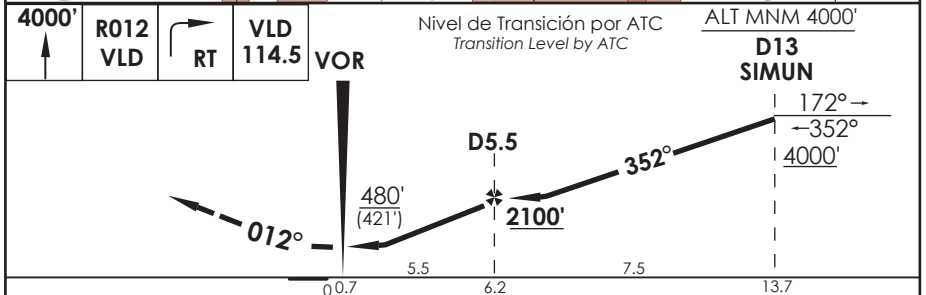
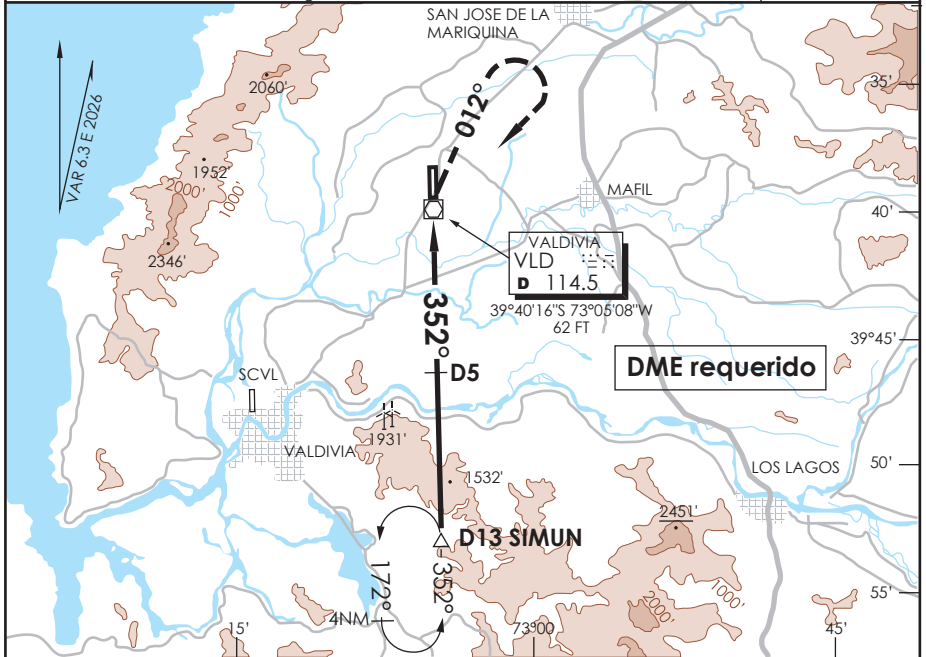
CAMBIO: ALT FAF/ ALT D10/ HLDG/ MAPT/ MDA/ VAR DGAC AMDT 103 06 AGOSTO 2026
Change: ALT FAF/ ALT D10/ HLDG/ MAPT/ MDA / VAR

DASA / SECCION AS-MAP

AD. PICHAY VALDIVIA - CHILE

SCVD IAC 3
VOR Rwy 35

APP TEMUCO RADAR APP Temuco RADAR	119.2/128.7	TORRE VALDIVIA Valdivia Tower	118.3	CONTROL TERRESTRE Ground Control	121.8
VOR VLD 114.5	FINAL APCH CRS 352°	MNM ALT D5.5 2100'	MDA 480' (421')	AD Elev THR 35 Elev	59' 54'
APCH FRUSTRADA: Ascenso 4000' R012 VLD. Regrese derecha VOR VLD. Ingrese HLDG BTN D13 S y D17 S, 352° izquierda o según ATC CLR. Missed Apch: Climb to 4000' on R012 VLD, right turn direct to VLD VOR. Enter on HLDG between D13 S and D17 S, 352° left or according to ATC clearance.					5600 FT MSA 25 NM VLD



Veloc. Terrestre Kts	80	100	120	140	160
Angulo DES 2.97° FPM	420'	525'	631'	736'	841'
Dist.FAF a MAPT 5.0 NM	3:45	3:00	2:30	2:09	1:53

CAMBIO: ← D9 / HLDG / VAR
Change: ← D9 / HLDG / VAR

DGAC AMDT 103

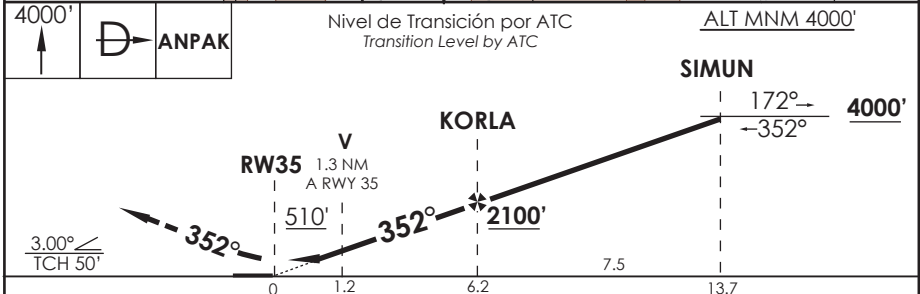
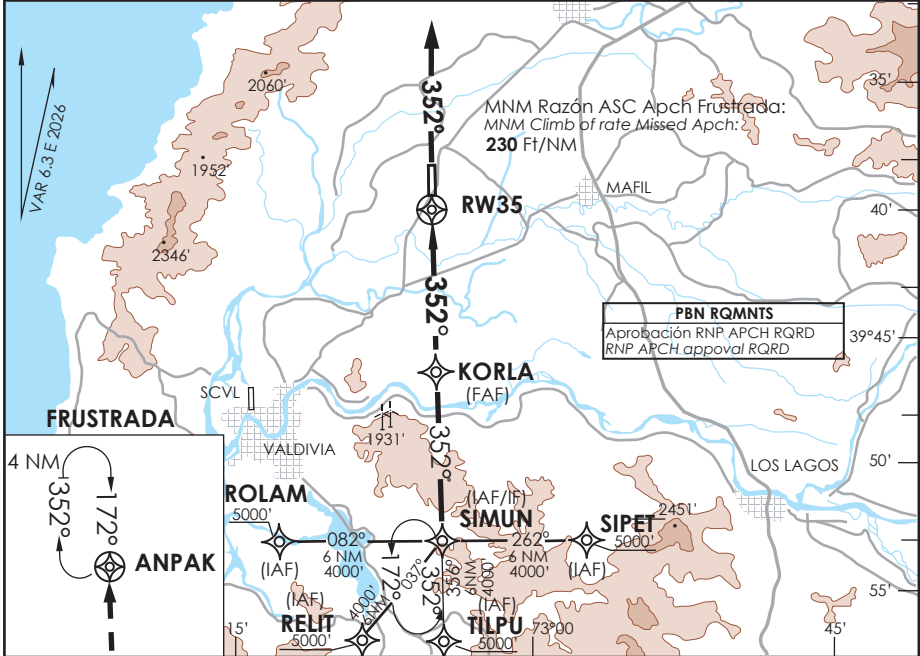
06 AGOSTO 2026

DASA / SECCION AS-MAP

AD. PICHAY VALDIVIA - CHILE

SCVD IAC 5 RNP Y Rwy 35 (LNAV only)

APP TEMUCO RADAR APP Temuco RADAR	119.2/128.7	TORRE VALDIVIA Valdivia Tower	118.3	CONTROL TERRESTRE Ground Control	121.8
RNP	FINAL APCH CRS 352°	MNM KORLA 2100'	MDA 510' (451')	AD Elev THR 35 Elev	59' 54'
APCH FRUSTRADA: Ascenso 4000' directo a ANPAK. Ingrese HLDG 172° derecho o según autorización ATC. Missed Apch: Climb to 4000' direct ANPAK . Enter on HLDG 172° rite or according to ATC clearance.					5600 FT
					MSA 25 NM RWY35



Circulando	DIRECTO RWY 35 Straight in RWY 35		CIRCULANDO Circling	ALTN
	LNAV MDA 510' (456')			
A	1.2 Km	1.6 Km	480' (421')	VER PAG. GEN 2.19
B	1.6 Km	2.1 Km	540'	
C			(481')	
D			620' (561')	

DASA / SECCIÓN AIS-MAP

VALDIVIA / AD PICHROY - SCVD

LISTA DE COORDENADAS

PUNTO DE RECORRIDO (WPT)	LATITUD	LONGITUD
RW17	39°38'25,10" S	73°05'11,91" W
RW35	39°39'33,44" S	73°05'09,39" W
ANPAK	39°24'15,95" S	73°05'43,06" W
ARTAL	39°30'21,27" S	73°01'58,16" W
ASAKU	39°15'43,00" S	72°58'55,00" W
GUXER	40°04'55,00" S	73°10'44,00" W
ILNUT	38°30'00,00" S	73°05'15,00" W
IRESA	39°45'11,98" S	73°04'56,91" W
ISUDO	40°15'42,00" S	73°05'16,00" W
KIBEL	39°17'28,00" S	72°51'53,00" W
KIKEN	40°05'17,18" S	73°05'13,46" W
KORLA	39°31'58,61" S	73°05'06,99" W
KOSMI	39°32'05,66" S	72°57'41,17" W
LITOP	39°22'20,54" S	72°58'22,90" W
MONKO	39°30'16,12" S	73°05'29,87" W
MUDOL	39°33'25,10" S	73°05'22,93" W
NEKOR	39°15'15,00" S	73°04'53,00" W
NENUL	39°18'16,84" S	73°05'09,51" W
PALUR	39°24'05,44" S	72°57'58,82" W
PONSO	39°47'39,00" S	72°56'50,00" W
PUPAR	38°30'00,00" S	72°47'33,00" W
REDOV	39°24'25,94" S	73°13'27,34" W
RELIT	39°57'38,45" S	73°10'00,23" W

PUNTO DE RECORRIDO (WPT)	LATITUD	LONGITUD
ROLAM	39°53'26,36" S	73°12'26,51" W
SIMUN	39°53'16,37" S	73°04'38,99" W
SIPET	39°53'05,86" S	72°56'51,51" W
TILPU	39°59'16,55" S	73°04'56,19" W
VAKUR	39°21'38,17" S	72°55'40,94" W
VD042	39°42'38,24" S	73°05'02,53" W
VD043	39°35'18,17" S	73°05'18,84" W
VD076	39°31'58,61" S	73°05'06,99" W
VD077	39°47'16,97" S	73°04'52,19" W
VD099	39°49'31,39" S	73°04'47,19" W
VD111	39°28'30,09" S	73°05'05,95" W
VD118	39°50'22,08" S	73°01'53,53" W
VD129	39°28'14,47" S	72°58'35,14" W
VD132	39°25'15,26" S	73°04'58,98" W
VD161	39°25'10,88" S	72°57'13,09" W
VD164	39°34'45,21" S	72°56'46,53" W
VD171	39°56'46,03" S	73°04'49,60" W
VD214	40°01'03,12" S	73°05'02,01" W
VD257	39°39'12,61" S	72°56'25,88" W
VD277	39°25'09,58" S	73°14'00,09" W
VD320	39°50'01,29" S	73°00'59,05" W
VD323	39°26'24,05" S	73°12'05,63" W
VD341	39°30'45,79" S	72°56'01,96" W

PUNTO DE RECORRIDO (WPT)	LATITUD	LONGITUD
VD376	39°15'14,64" S	73°14'02,65" W
VD993	39°47'11,12" S	73°00'31,55" W
VD994	39°47'32,83" S	73°00'40,87" W
VD995	39°30'09,32" S	73°24'15,94" W
VD996	39°34'36,23" S	72°36'25,97" W
VD997	39°27'11,95" S	73°02'27,53" W
VD998	39°33'59,45" S	73°01'24,26" W
VD999	39°33'20,13" S	73°01'30,37" W

VALDIVIA / AD PICHROY - SCVD IAC 5

PROCEDIMIENTOS DE APROXIMACIÓN RNP / RNP APPROACH PROCEDURES

(Esta información complementa a las cartillas publicadas en la AIP Chile VOL II / This information complements the charts published in the AIP Chile VOL II)

IAC 5 RNP Y RWY 35 (LNAV only)

NR SERIE	TRANS ID	PATH TERM	PUNTO DE RECORRIDO (WPT)	FO	COURSE/TRACK °M/T	DIST (NM)	TURN	ALTITUD	REST VEL	VPA	TCH	NAV
10		IF	(IAF/IF) SIMUN	-	-	-	-	4000 FT+	-	-	-	1
20		TF	(FAF) KORLA	-	352° (358,30)	7,5	-	2100 FT+	-	-	-	1
30		TF	(MAPt) RW35	Y	352° (358,30)	6,21	-	104 FT+	-	3°	50 FT	0,3
40		TF	(MAHF) ANPAK	-	352° (358,45)	15,28	-	4000 FT+	-	-	-	1
50		HM	(MAHF) ANPAK	Y	172° (178,45)	4	RT	4000 FT+	-	-	-	1
10	SIPET	IF	(IAF) SIPET	-	-	-	-	5000 FT+	-	-	-	1
20	SIPET	TF	(IAF/IF) SIMUN	-	262° (268,37)	6	-	4000 FT+	-	-	-	1
10	TILPU	IF	(IAF) TILPU	-	-	-	-	5000 FT+	-	-	-	1
20	TILPU	TF	(IAF/IF) SIMUN	-	356° (002,11)	6	-	4000 FT+	-	-	-	1
10	RELIT	IF	(IAF) RELIT	-	-	-	-	5000 FT+	-	-	-	1
20	RELIT	TF	(IAF/IF) SIMUN	-	037° (043,45)	6	-	4000 FT+	-	-	-	1
10	ROLAM	IF	(IAF) ROLAM	-	-	-	-	5000 FT+	-	-	-	1
20	ROLAM	TF	(IAF/IF) SIMUN	-	082° (088,37)	6	-	4000 FT+	-	-	-	1